



IMMUNITRACK

**Tetramer panel,
ICS and IFN γ
ELISA after MLR
CMV, Flu and
MART-1**

OLA42 – 10.02.20

Tetramer panel, Quanteon 7-colour panel on KNBC6 & 11

Protocol

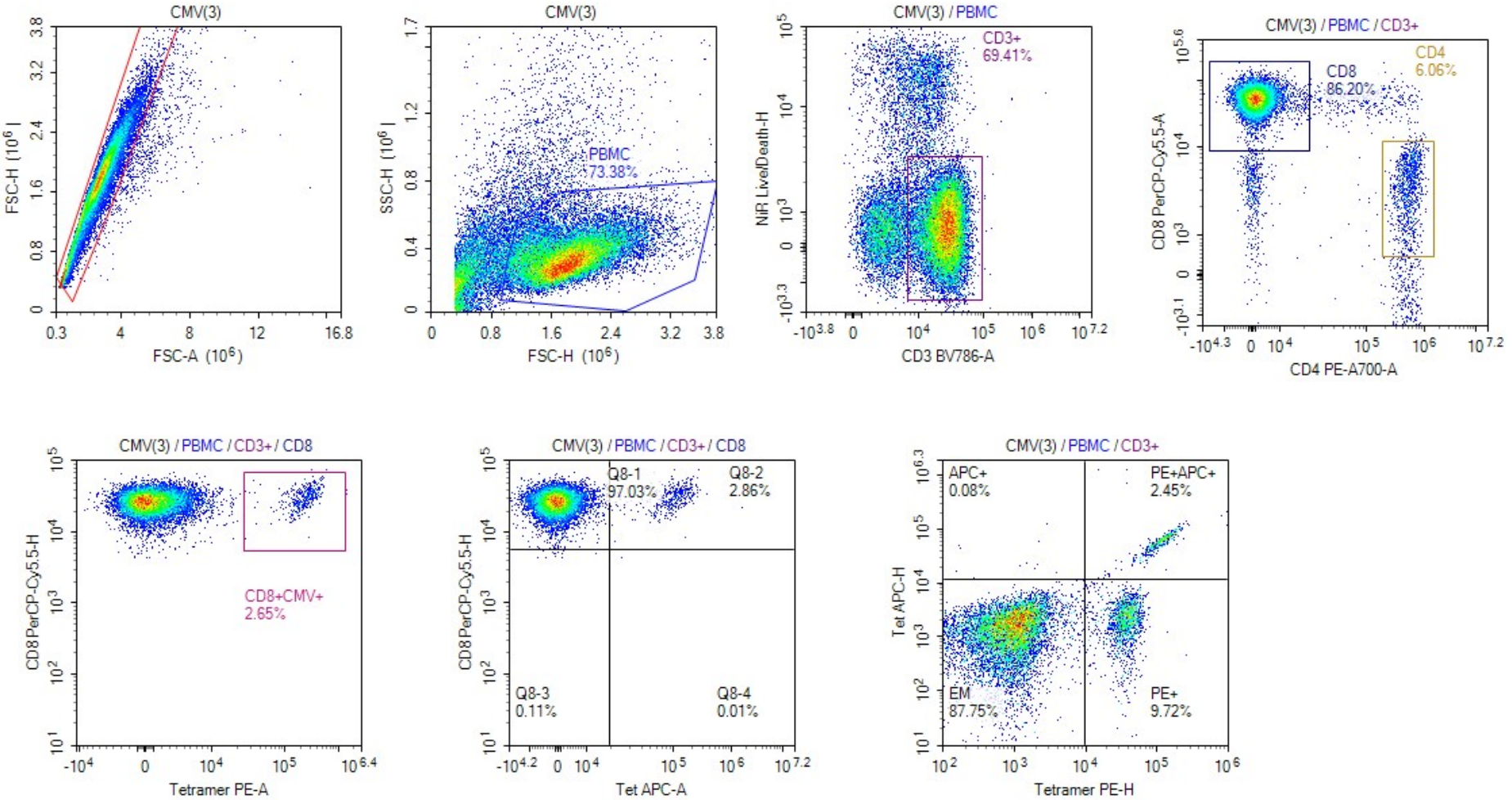
- DCs pulsed with peptides (CMV, MART-1 and Flu) for 1h was incubated with CD8+ T cells for 9 days with IL2+7 added every 2-3 days
- The cells were split in 3
 1. Stained with tetramers to identify peptide specific CD8+ T cells
 2. Re-stimulated with peptide and supernatant was harvested to run an IFN γ ELISA
 3. Re-stimulated with peptide and incubated with golgiPlus and Stop for 8h whereafter ICS

Complexes used in this study:

IT-A0201_21_PE	CMV-A2: NLVPMVATV
IT-A0201_28_PE	MART-1: ELAGIGILTV
IT-A0201_13_PE	Flu-A2: GILGFVFTL

Tetramer panel, Quanteon 7-colour panel on KNBC6 & 11

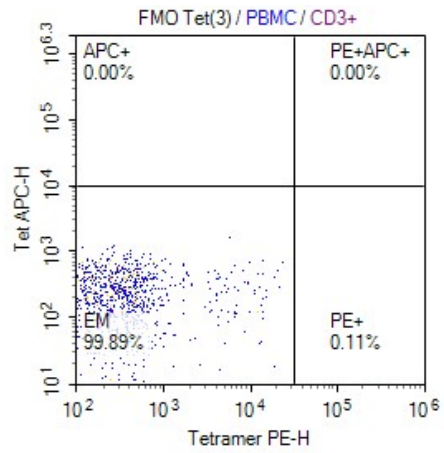
Gating Strategy



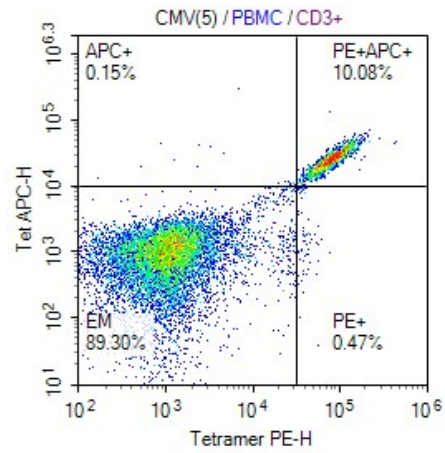
Tetramer panel, Quanteon 7-colour panel on KNBC6 & 11

Representative tetramer staining

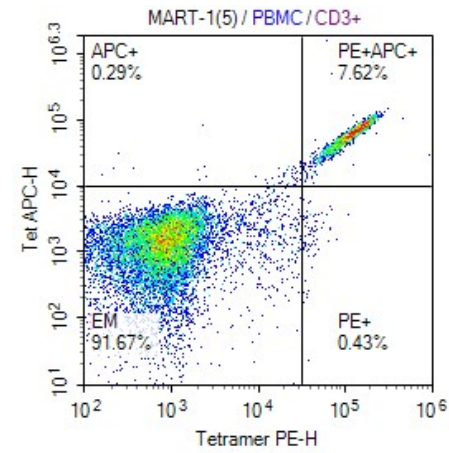
FMO



CMV



MART-1



Flu

